

» CUSTOMIZED ABUTMENTS, OFFERING «

Serie	Compatibility	Implant Connection Diameter (mm)	Recommended Torque	Customized Abutment Ti (incl. 2 abutment screws)	Customized Abutment CoCr (incl. 2 abutment screws)
<b>B</b>	Bredent Medical / Sky	D 3.5-5.5	25 Ncm	B 9000	B 9800
<b>BS</b>	BEGO Implant Systems / Semados S/RI/RS/RSX	D 3.25/3.75	30 Ncm	BS 9000	BS 9800
		D 4.1		BS 9010	BS 9810
		D 4.5		BS 9020	BS 9820
		D 5.5		BS 9030	BS 9830
<b>C</b>	Altatec / Camlog	D 3.3	20 Ncm	C 9000	C 9800
		D 3.8		C 9010	C 9810
		D 4.3		C 9020	C 9820
		D 5.0		C 9030	C 9830
		D 6.0		C 9040	C 9840
<b>CX</b>	Medentis Medical / ICX	D 3.75-4.8	30 Ncm	CX 9000	CX 9800
<b>D</b>	Altatec / Conelog	D 3.3	20 Ncm	D 9000	D 9800
		D 3.8/4.3		D 9010	D 9810
<b>E</b>	Nobel Biocare / NobelReplace Tapered	NP 3.5	35 Ncm	E 9000	E 9800
		RP 4.3		E 9010	E 9810
		WP 5.0		E 9020	E 9820
<b>EV</b>	DENTSPLY Implants / ASTRA TECH OsseoSpeed EV	D 3.0	25 Ncm	EV 9000	EV 9800
		D 3.6		EV 9010	EV 9810
		D 4.2		EV 9020	EV 9820
		D 4.8		EV 9030	EV 9830
		D 5.4		EV 9040	EV 9840
<b>F</b>	Nobel Biocare / NobelActive, NobelReplace Conical	D 3.0	15 Ncm	F 9020	F 9820
		NP 3.5		F 9000	F 9800
<b>H</b>	BIOMET 3i / Certain	RP 4.3/5.0	35 Ncm	F 9010	F 9810
		D 3.4		H 9000	H 9800
		D 4.1		H 9010	H 9810
<b>I</b>	BIOMET 3i / External Hex	D 5.0	20 Ncm	H 9020	H 9820
		D 3.4		I 9000	I 9800
		D 4.1		I 9010	I 9810
<b>K</b>	Nobel Biocare / Brånemark	D 5.0	35 Ncm	I 9020	I 9820
		NP 3.5		K 9000	K 9800
		RP 4.1		K 9010	K 9810
<b>L</b>	Straumann / Bone Level	WP 5.1	35 Ncm	K 9020	K 9820
		NC 3.3		L 9000	L 9800
		RX 4.1/4.8		L 9010	L 9810
<b>N</b>	Straumann / Tissue Level	RN 4.8	35 Ncm	N 9010	N 9810
		WN 6.5		N 9020	N 9820
		NNC 3.5		N 9030	N 9830
<b>R</b>	Zimmer Dental / Tapered Screw-VentMIS/SEVEN Internal HexBioHorizons/Tapered Internal, Tapered Internal Plus, Tapered Tissue Level	D 3.5	30 Ncm	R 9000	R 9800
		D 4.5		R 9010	R 9810
		D 5.7		R 9020	R 9820
<b>S</b>	DENTSPLY Implants / ASTRA TECH OsseoSpeed TX	D 3.0	15 Ncm	S 9030	S 9830
		D 3.5/4.0		S 9000	S 9800
		D 4.5/5.0		S 9020	S 9820
<b>T</b>	DENTSPLY Implants / XIVE S	D 3.4	25 Ncm	T 9000	T 9800
		D 3.8		T 9005	T 9805
		D 4.5		T 9010	T 9810
		D 5.5		T 9020	T 9820
	Microcone	D 3.0	15 Ncm	1-90-01-ET	1-90-04-ET
	Microcone / Quattrocone	D 3.5-5.0	25 Ncm	2-90-01-ET	2-90-04-ET

Application and product availability may differ from country to country. Please contact your local sales representatives for detailed information on the available applications and prosthetic lines.

» Contact «

MEDENTIKA® GmbH  
Hammweg 8-10  
76549 Hügelsheim  
info@medentika.de  
www.medentika.de

For CAD/CAM related questions

**Austria, Czech Republic, Germany, Hungary**  
Phone: 0049 7614501336  
E-mail: cadcam.support.de@straumann.com

**Belgium, Netherlands, Luxembourg**  
Phone: 0032 27901025  
E-mail: support.cares.be@straumann.com

**Denmark, Finland, Norway, Sweden**  
Phone: +46(0)200-222101  
E-mail: cadcam.support.se@straumann.com

**Italy**  
Phone: 0039 23 932 83 73 or 0039 23 932 83 63  
E-mail: cadcam.support.it@straumann.com

**Japan**  
Phone: +81 (0)120-418-320  
E-mail: cad-cam.jp@straumann.com

**Portugal, Spain**  
Phone: 0034 902400979  
E-mail: cad-cam.es@straumann.com

**Switzerland**  
Phone: 0041 61 965 42 08  
E-mail: cad-cam.ch@straumann.com

**United Kingdom**  
Phone: 0044 1293 651 235 or 08000 288 267  
E-mail: digitalsolutions.support.uk@straumann.com

**USA**  
Phone: 800-448-8168  
E-mail: scannertechsupport@straumann.com

» Customized single-unit solutions through Straumann/Etkon milling centers «



**MPS**  
Multi Platform Systems

**WHAT'S NEW**  
AS OF JUNE 2018

**MEDENTIKA®**  
A Straumann Group Brand

# Customized single-unit solutions through Straumann/Etkon milling centers

## MedentiCAD and Etkon



- Titanium Grade 5 and CoCr
- Abutment blanks (Ø 11.5 or 16) delivered by MEDENTiKA® and milled in the Straumann/etkon milling centers in GE, USA and JP for their respective markets.

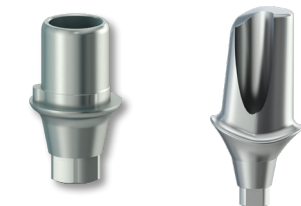
Source MedentiCAD abutments in the way that best suits your needs and benefit from the Straumann/etkon milling services and technology.

## X-Stream

Straumann crown/coping



MEDENTiKA® ti-base\* (3.5 or 5.5) or customized abutment



With CARES X-Stream you benefit from:

**EFFICIENCY:** one single process to receive both the abutment and coping/crown

**PRECISION:** designed to ensure a perfect fit between the abutment and the coping/crown

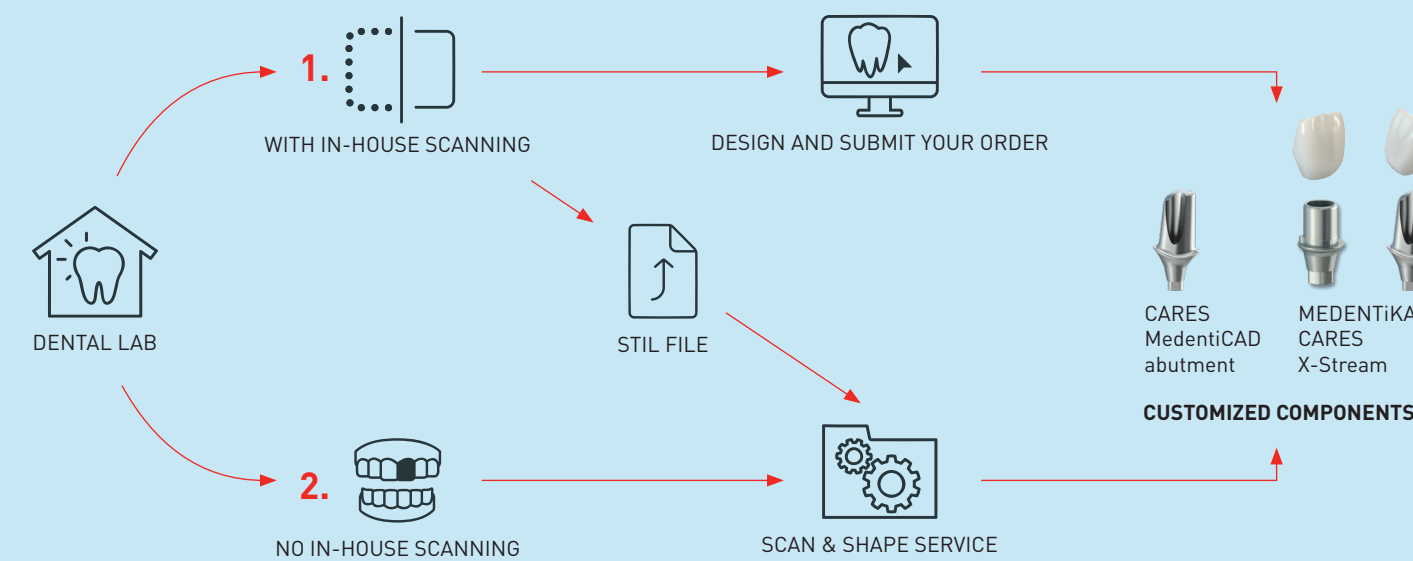
**FLEXIBILITY:** choose the abutments, materials and techniques that best suit your needs

## Available materials for single-unit restorations within X-Stream

	Ceramic						Metal	Polymer	
Material	nlce available in 12 shades	IPS e.max CAD available in 45 shades	zerion UTML available in 6 VITA shades and 1 bleach shade	zerion ML available in 5 shades	zerion LT available in 9 shades	3M ESPE Lava Plus Zirconia available in 16 VITA shades and 2 bleach shades	3M Lava Esthetic available in 5 VITA shades	coron Cobalt chromium	polycon ae available in 5 shades
MEDENTiKA® Ti-base or Custom. abutment									

Application and material availability may differ from country to country. Please contact your local sales representatives for detailed information on the available applications and prosthetic lines. For more information on the CareS X-Stream solution, please refer to the Straumann CARES X-Stream brochure.

## Full flexibility when using both digital and traditional workflows



Application and material availability may differ from country to country. Please contact your local sales representatives for detailed information on the available applications and prosthetic lines.

For more information on the CareS X-Stream solution, please refer to the Straumann CARES X-Stream brochure.

\*X-Stream with ti-bases are not available in all countries.

## 1. CARES and Connectivity



### WITH IN-HOUSE-SCANNING

Customer scans, designs and submits his order: the master model is scanned and the restoration is designed by the lab.



**CARES VISUAL**  
Version 11.1 and higher

### CONNECTIVITY\*

- **Dental Wings DWOS Software:** Version 7.1 and higher
- **3Shape:** DMEs will be adapted to MEDENTiKA® portfolio. Version 2017 and higher
- **Exocad Software\*\***

\*The availability of the Medentika portfolio on these software may differ from country to country  
\*\* Exocad is only available through Renningen

## 2. SCAN & SHAPE and WORKFLOW

### NO IN-HOUSE SCANNING

Customer submits his order online and sends his master-cast and/or wax-up model to the Scan & Shape service for scan, design and fabrication:



WAX UP



MASTER CAST



STL FILE



DESIGN PROPOSAL



APPROVAL



CENTRAL MILLING



QUALITY CONTROL



PRODUCT DELIVERY

\*\* Not yet available in all markets

\*\* Not all products are available through wax-up workflow

\*\*\* STL file-upload option availability may vary from country to country